



Flexible Customization & Fast Delivery for Brands since 2006

# AW 24/25 collection

Phone case series designs



PHONE  
手机壳



EARPHONE  
耳机壳



TABLET  
平板套



LAPTOP  
电脑套



WATCH  
表带

# Contents

1.Color Reference .....	P3
2.Florals Theme .....	P14
3.Circular Theme .....	P27
4.Texture Trend Prediction .....	P32



# Color

# Future Dusk 2025

WGSN and Coloro announce Color of the Year



**Future Dusk (Coloro 129-35-18)** is a dark, moody and intriguing hue, sitting between blue and purple. **Transcendent Pink** is a barely-there hue that feels more like an elevated neutral than a traditional pink, giving it a grounding and balancing appeal. **Aquatic Awe** is a transformative turquoise. **Sunset Coral** is an energising and feelgood colour that appeals to the pursuit of joy. **Ray Flower** is a radiant yellow with a warm and inviting quality.



## Decoding the Colour Trend Forecast for A/W' 24/25

For the season Autumn/Winter' 24/25, WGSN along with its primary colour system, Coloro has launched the '5 Key Colors' that will drive consumer purchases across all industries. These are taken from Coloro's comprehensive library of 3500+ colours, which are backed by full-proof research to ensure achievability and durability.

This time, the driving ideology behind the colour forecast surrounds topics of sustainability, the environment, things that bring us closer to outer space and a slow lifestyle that has evolved post-pandemic.



## Sandstone Color



The major fashion brands and designers at the 24/25 autumn and winter shows are inspired by geological environments such as sandstone, soil, and gray rocks in nature and extract the Sandstone to incorporate it into the design of new fashion business commuting wear.

**Sandstone** is a plain and natural, stable and high-quality neutral color, affected by different materials such as woolen fabric, leather, velvet, and knitwear, showing changes in gloss, texture, and thickness. The gradient effect of hue is achieved through layering and exposure, meeting the needs of different people and expressing different personalized fashion attitudes.





# Raw Sand



Chanel



The warm brown of **Raw Sand** is an important tone in Fall/Winter. This realistic and nostalgic palette sets off the comfort of fur, softness of leather and the matte surface of wool.



Oil Palm



by Dendezeiro



louisvuitton



Chanel



hedmayner



## The Coral Blush Color Trend- AW24



In Fall/Winter 2024, **Coral Blush** was showcased on the latest runways of Jil Sander, LOEWE and PRADA. The lower saturation of pink is matched with the tone of this season. The steady and soft color presents a proper visual impact. It is always mixed with monos and other basic colors.

## The Coral Blush Color Trend- AW24





# APPLE COLOR


## TPU/Silicone Colour

New


**iPhone 14 Silicone Case with MagSafe - Canary Yellow**

\$49.00  
or  
\$4.08/mo. for 12 mo.\*  
Get 3% Daily Cash with Apple Card

Color - Canary Yellow



To purchase with monthly pricing, add this item to your bag and choose to check out with Apple Card Monthly Installments.<sup>9</sup>

 Delivery:  
In Stock  
Free Shipping  
Get delivery dates



## PU Colour

### iPhone 14 Pro Max Leather Case with MagSafe - Ink

\$59.00  
or  
\$4.91/mo. for 12 mo.\*  
Get 3% Daily Cash with Apple Card

Color - Ink



To purchase with monthly pricing, add this item to your bag and choose to check out with Apple Card Monthly Installments.<sup>9</sup>

 Delivery:  
In Stock  
Free Shipping  
Get delivery dates

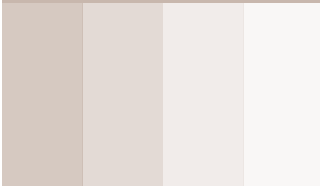

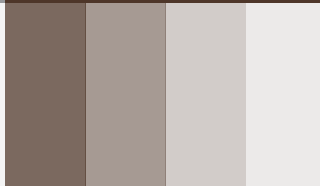
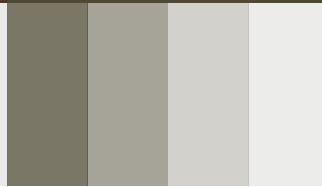
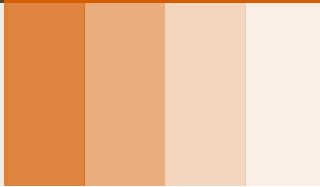
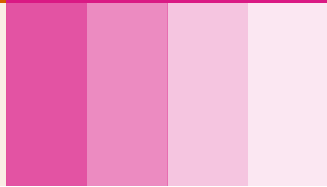
 Pickup:  
Check availability



# Recommended Color AW 23/24

Reference

According to the recommended colours of WSGN/PANTONE/APPLE and other authoritative institutions, C&T team recommend the following 6 key colours and two classic colours of black and white. Among them, orange and pink hues can give autumn and winter a bright and vibrant feeling. The other four colours are classic autumn/winter colours and are good choices for matching outfits.

Transcendent Pink	Cool Gray	Hot Fudgo	Forest Night	Dark Orange	Barbie Pink
Hex #C8B7AD	Hex #97999B	Hex #4E3629	Hex #4E4934	Hex #D45D00	Hex #C8B7AD
RGB 200 / 183 / 173	RGB 151 / 153 / 155	RGB 78 / 54 / 41	RGB 78 / 73 / 52	RGB 212 / 93 / 0	RGB 218 / 25 / 132
CMYK 17 / 24 / 21 / 0	CMYK 20 / 14 / 12 / 40	CMYK 30 / 71 / 75 / 81	CMYK 35 / 38 / 86 / 77	CMYK 0 / 68 / 100 / 0	CMYK 1 / 92 / 4 / 0
Pantone 4085 C	Pantone Cool Gray 7C	Pantone 476 C	Pantone 7771 C	Pantone 717 C	Pantone 219 C
					

Stylish Black

#C8B7AD

16 24 32

100 / 79 / 44 / 93

Black 6 C



## Commercial white

Hex #FFFFFF  
RGB 255 / 255 / 255  
CMYK 0 / 0 / 0 / 0





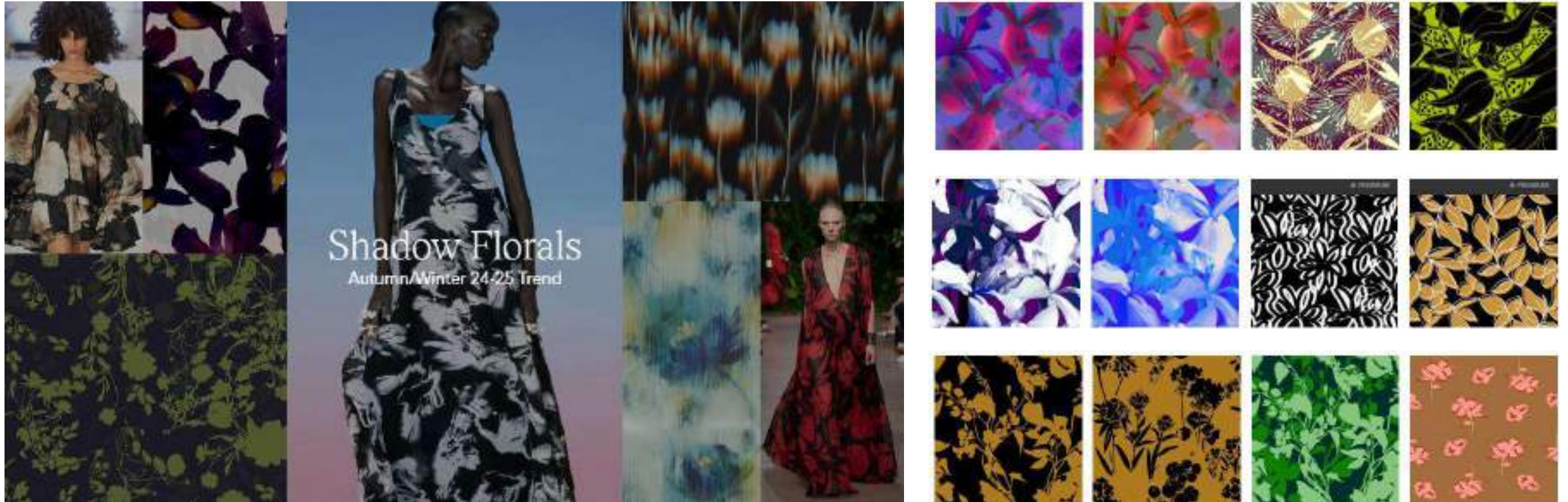
# Pattern design selection

# Florals Theme



# Shadow Florals AW 24 Trend

Blurred Florals / Ink Bleed Flowers / Dark Saturated Hues / Shapes & Shadow Forms / Soft Edges / Silhouettes and Contrast Floral Patterns





## Shadow Florals AW 24 Trend

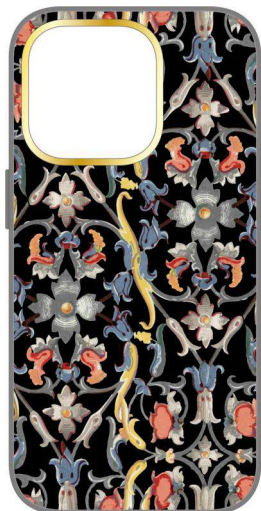


### Look 1

- Blurred Florals
- Ink Bleed Flowers



C20230901



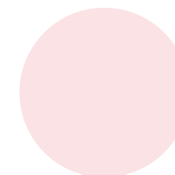
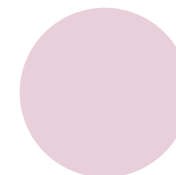
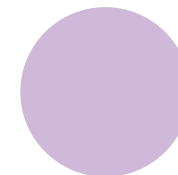
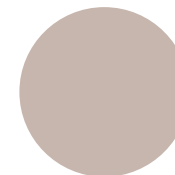
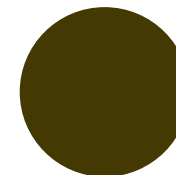
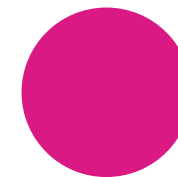
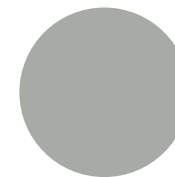
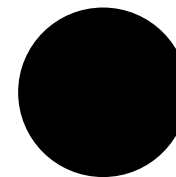
C20230902



C20230903



C20230904



C20230905



C20230906



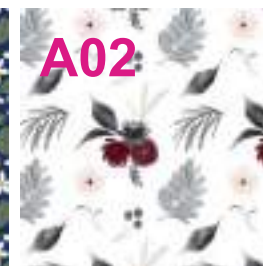
C20230907



C20230908



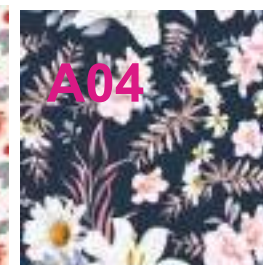
A01



A02



A03



A04

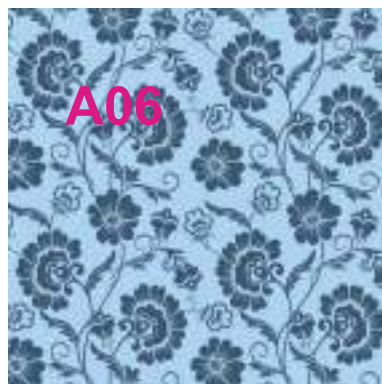


## Shadow Florals AW 24 Trend



### Look 1

- Blurred Florals
- Ink Bleed Flowers





## Shadow Florals AW 24 Trend



### Look 1

- Blurred Florals
- Ink Bleed Flowers



phone case

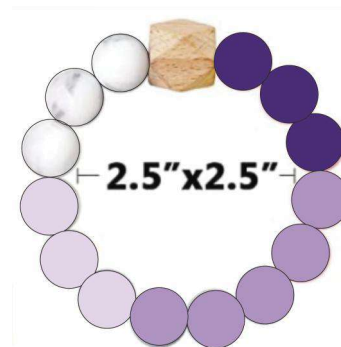


C20230906

watch strap



beads bracelet



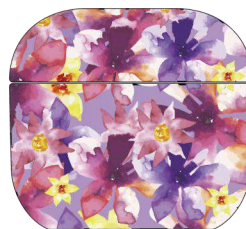
charging Cable



card holder



airpod case





## Drawn Flora AW 24 Trend

Monoprint Flower Drawings / Tonal Colour Work / Simplified Flora / Linear Drawings / Expressive Ink Foliage / Cut-out Mono Florals / Bleach-out Foliage / Solid and Linear Combinations





## Drawn Flora AW 24 Trend



## Look 2

- Monoprint Flower Drawings
- Simplified Flora



C20230909



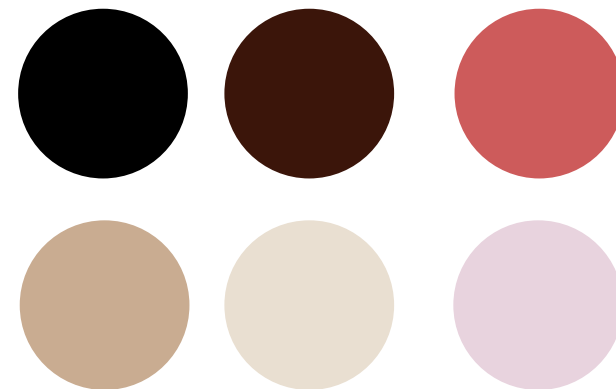
C20230910



C20230911



C20230912



C20230913



C20230914



C20230915



C20230916





## Drawn Flora AW 24 Trend



### Look 2

- Monoprint Flower Drawings
- Simplified Flora



C20230917



C20230918



C20230919



C20230920



C20230921



C20230922



C20230923



C20230924



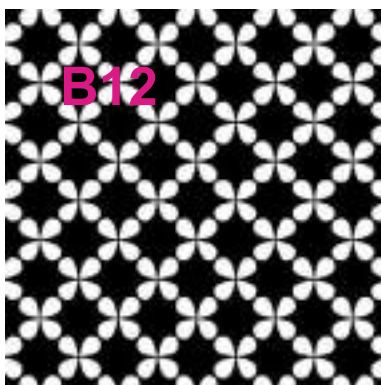
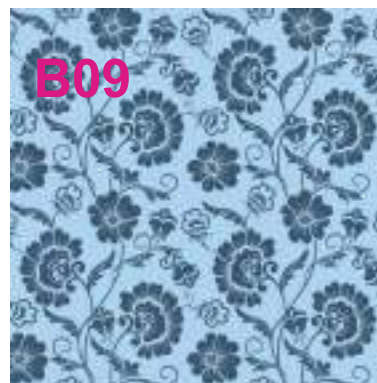


## Drawn Flora AW 24 Trend



### Look 2

- Monoprint Flower Drawings
- Simplified Flora





## Secluded Garden AW 24 Trend

Glowing Florals / Crowded Flower Gatherings / Dark Foliage and Brights / Tropical Houseplant Worlds / Glow in the Dark Botanicals / Nighttime Garden





## Secluded Garden AW 24 Trend



### Look 3

- Glowing Florals
- Nighttime Garden



C20230925



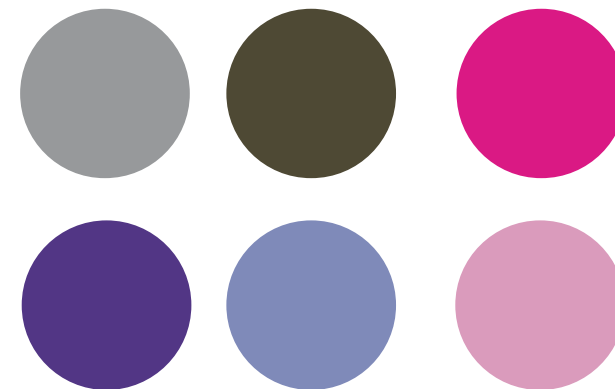
C20230926



C20230927



C20230928



C20230929



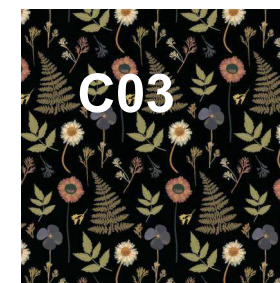
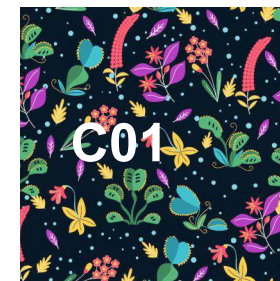
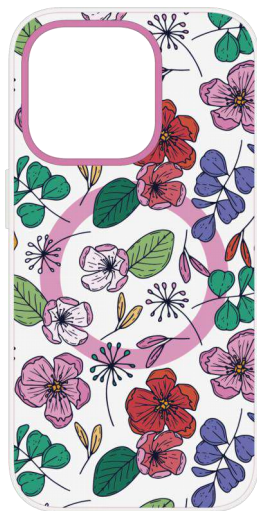
C20230930



C20230931



C20230932





## Secluded Garden AW 24 Trend



### Look 3

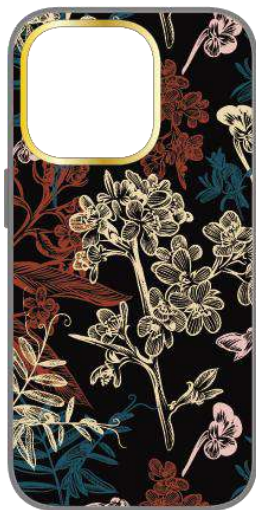
- Glowing Florals
- Nighttime Garden



C20230933



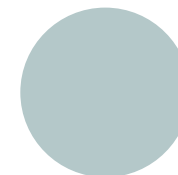
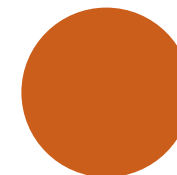
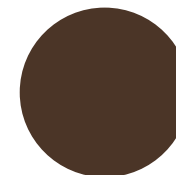
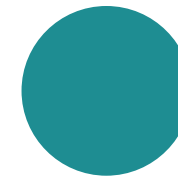
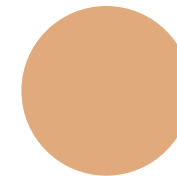
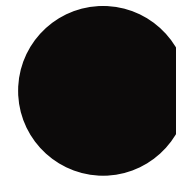
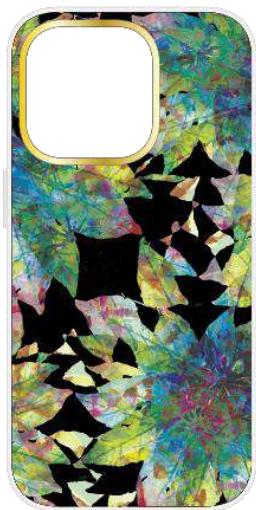
C20230934



C20230935



C20230936



C20230937



C20230938



C20230939



C20230940



C202310001



C202310002



C202310003



Flexible Customization & Fast Delivery for Brands since 2006





## Secluded Garden AW 24 Trend



### Look 3

- Glowing Florals
- Nighttime Garden



C20230932



# Circular Theme



**Circular**

Autumn/Winter 24-25 Trend



## Circular AW 24 Trend



### Look 1

- Rounded Smudges
- Linked Rings



C20230941



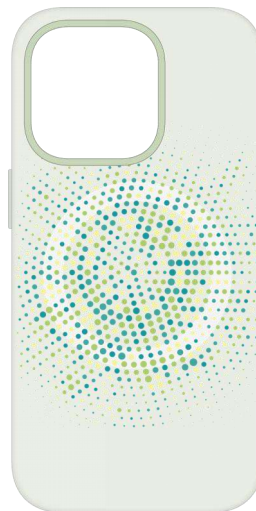
C20230942



C20230943



C20230944



C20230949



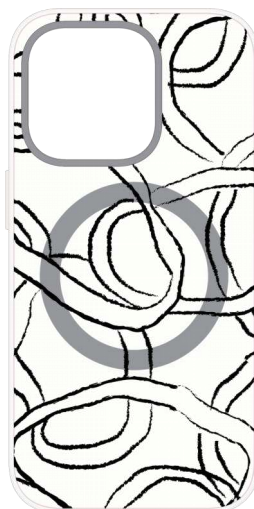
C20230950



C20230945



C20230946



C20230947



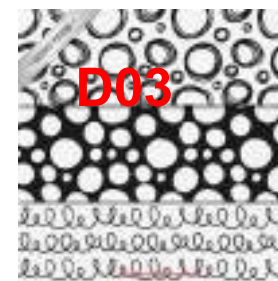
C20230948



D01



D02



D03



D04



## Circular AW 24 Trend



### Look 1

- Rounded Smudges
- Linked Rings





## Circular AW 24 Trend



## Look 1

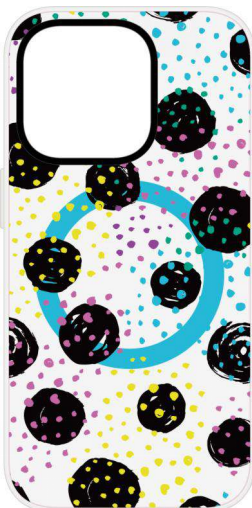
- Rounded Smudges
- Linked Rings



C20230945



D20230945



E20230945





# Texture Trend Prediction

## Trend Alert: Faux Fur



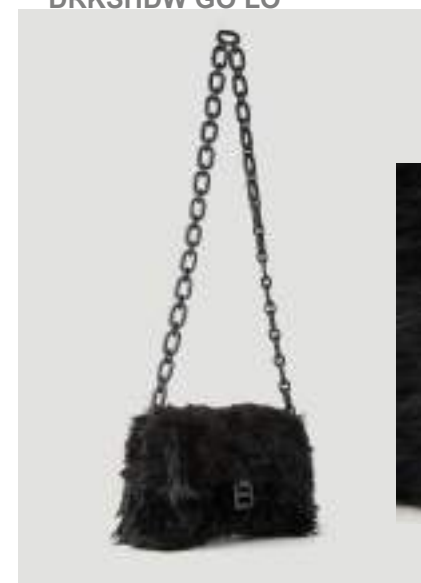
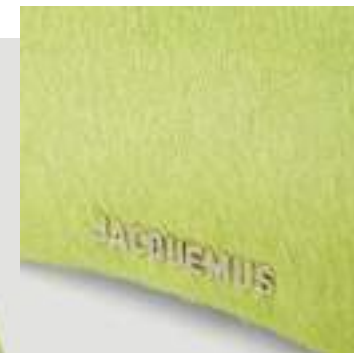
TEDDY FLEECE PHONE  
CASE



CONVERSE X  
DRKSHDW GO LO



JACQUEMUS



Balenciaga



## NEO POLARS

Fleece is back this season, turning up in every segment of the market. Here, it moves away from the realm of sports to encompass more hybrid uses. For sweatshirts, fleece also looks to nature for inspiration, focusing on more plant-based compositions, with ultra-cozy 100% cottons and blends with recycled polyesters! Double-faced fleece pairs its high-strength and warmth with more casual visuals.









## META LAVENDER / 2024

SEE MORE: #PINTEREST TREND MOODBOARDS #MAJIEKE DE BUITER #WWW.TRENDSENSES.COM

Sources: Karmood - Catella Gregorovich - Chai Lu - Nalungli - Yun Mc Studio - The Sequence Group - BIRD BIRD - Tailing Wang - Wei Cuiya

# META LAVENDER // 2024



SJK23070401



SJK23070402



SJK23070403



FBB23070407



FBB23070408



FBB23070409



Flexible Customization & Fast Delivery for Brands since 2006





# SUBMERGED SEA // 2024



102EY00044  
5



102EY000445



102EY00044  
5



102EY000445





# Wild Skins AW 24 Trend

Vegetal Animals Skins / Textured Prints / Blown Up Pattern / New Skin Interpretations / Blotched & Natural Skins





## Wild Skins AW 24 Trend



CARD HOLDER WITH STICKER



Núnoo Dandy Deluxe  
Calf-Hair Cross Body  
Bag



Slip



STAND STUDIO



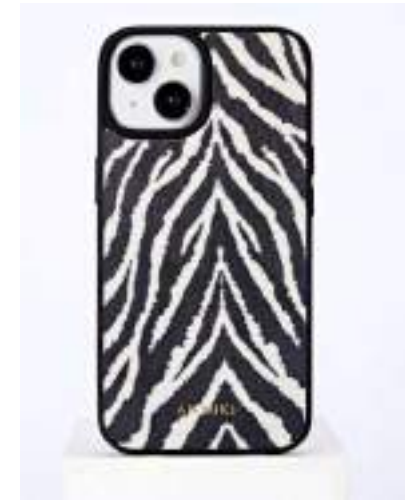
Kate Spade New York Manhattan  
Zebra Chenille and Leather Small  
Tote Bag



Dolce & Gabbana



## Wild Skins AW 24 Trend



# Hey!

**We are the manufacturer for smartphone & laptop accessories and professional on quick customized production solution.**

**If you also concern about the customized products, please don't miss our ODM service. We believe we can bring value to you.**

## Feel free to contact us.



Website : [www.ctworld168.com](http://www.ctworld168.com)

Tel : 020-89014309 / +86-17665023206

Address : Room 501,Building 3,No.539,Shibei Industry Road,Dashi Street,Panyu District,Guangzhou

Copyright © 2022 C&T, All Rights Reserved

Published by: C&T Marketing Operations Center