



Flexible Customization & Fast Delivery for Brands since 2006

GRS Coffee Grounds

Coffee grounds granules made from 10% coffee grounds plus 90% recycled TPU



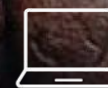
PHONE
手机壳



EARPHONE
耳机壳



TABLET
平板套



LAPTOP
电脑套



WATCH
表带

• COFFEE GROUNDS •

Over **2.25** billion cups of coffee are consumed worldwide everyday, creating **22,500** tons of waste from coffee grounds.

Coffee waste costs businesses millions in disposal fees and harms our planet through associated methane emissions, one of the most potent greenhouse gases.

As the coffee industry continues to boom, the environmental sustainability of the business has become a rising concern.



What's the problem with spent coffee grounds?

A potent waste with negative impacts

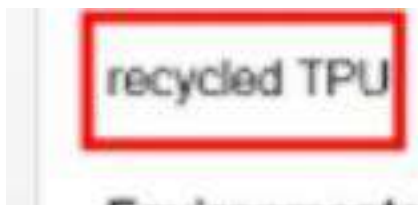
- The grounds that make these coffees are used only once and then immediately discarded.
- When spent coffee grounds are sent to landfill they can produce methane and carbon dioxide, greenhouse gases that contribute to global warming.
- The waste coffee grounds also contribute towards the huge financial cost on tax payers of running and maintaining landfills.
- While many coffee brands promote the ethical treatment of their growers and the sustainability of their farms, little attention is paid to the environmental impact of the organic waste at the end of the coffee chain.

Current system of coffee waste in the City



• RECYCLING PROCESS •





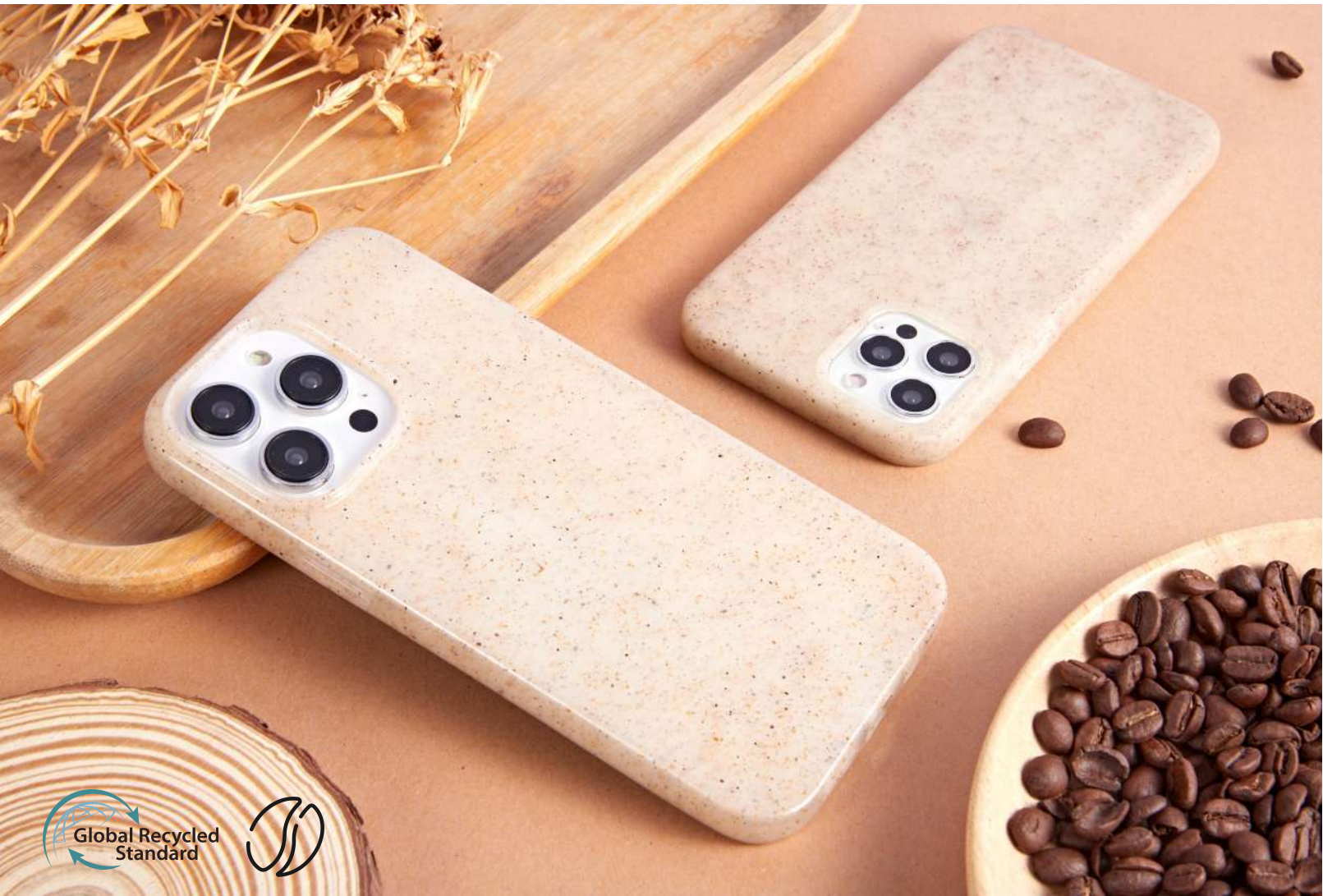
• Our Certifications •



Ingredients: **10%** coffee grounds + **90%** recycled TPU

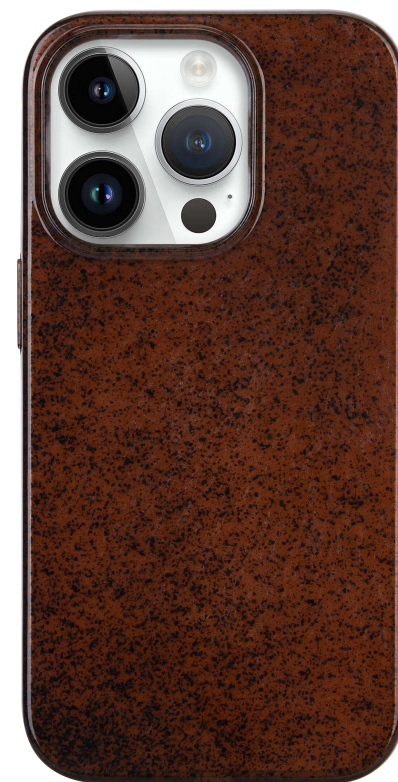
Environmentally friendly ratio: Up to **100%**

Product Category	Product Details	Material Composition*	Standard (Label Grade)	Facility Number
Processed post-Consumer materials (PC0035)	Chips(pellets)(PD0085)	50%Recycled post-consumer polyethylene(RM0193)+50% Polyethylene(RM0190)	GRS	162517
Processed post-Consumer materials (PC0035)	Chips(pellets)(PD0085)	100%Recycled post-consumer poly(1,4-cyclohexylene dimethylene terephthalate glycol)(PCTG)(RM0267)	GRS	162517
Processed post-Consumer materials (PC0035)	Chips(pellets)(PD0085)	100%Recycled post-consumer Polyolaltha olfin(POE) (RM0267)	GRS	162517
Processed post-Consumer materials (PC0035)	Chips(pellets)(PD0085)	90%Recycled post-consumer thermoplastic polyurethane (RM267)+10% Coffee powder (RM0262)	GRS	162517
Hard goods (PC0022)	Sheets (PD0100)	100% Recycled post-consumer polyethylene terephthalate (PET)(RM0197)	GRS	162517
Hard goods (PC0022)	Sheets (PD0100)	100% Recycled post-consumer polyvinyl chloride(RM0267)	GRS	162517
Hard goods (PC0022)	Sheets (PD0100)	100% Recycled post-consumer polypropylene(RM0205)	GRS	162517
Processed post-Consumer materials (PC0035)	Chips(pellets)(PD0085)	100% Recycled post-consumer Acrylonitrile-styrene copolymer (RM0267)	GRS	162517
Processed post-Consumer materials (PC0035)	Chips(pellets)(PD0085)	40% Recycled post-consumer polyethylene (RM0193) + 60% Polyethylene (RM0190)	No label	162517
Processed post-Consumer materials (PC0035)	Chips(pellets)(PD0085)	30% Recycled post-consumer polystyrene (RM0209) + 70% Polystyrene (RM0206)	No label	162517
Fabrics (PC0028)	Non-woven fabrics (PD0062)	100% Recycled post-consumer polypropylene (RM0205)	GRS	162517
Processed post-Consumer materials (PC0035)	Chips(pellets)(PD0085)	80% Recycled post-consumer polyethylene (RM0193) + 20% Polyethylene (RM0190)	GRS	162517



Coffee Ground Recycled TPU case

Made of Recycled TPU and coffee ground material, up to 100% sustainable material.



- Performance test report •
 - High and low temperature test -



Humidity:
 $65\% \pm 20\%$

Temperature:
 $23^{\circ}\text{C} \pm 2^{\circ}\text{C}$

Result: **PSSS** 

• Coffee cups •


KaffeeForm turns recycled coffee waste and renewable raw materials into reusable to-go coffee cups and some peripheral products.

Weducer Cap

The cap fits on the Weducer Cup Refined & the Weducer Cup Essential – cap your Cup, and off you go!

€ 3,90

[View more](#)




Tray

The tray is an accessory for the many small things in everyday life which can easily get lost and should deserve more attention. It's up to you – keys, jewellery, pens, cards or cosmetics. They fit very well on the oval shaped tray.

€ 12,90

[Buy now](#)



Coffee Watch Collaboration

When sustainability, quality, and aesthetic come together.

The first watch worldwide that features a case made from our game-changing coffee material with recycled coffee grounds.

Available in 5 variations.

229,00€

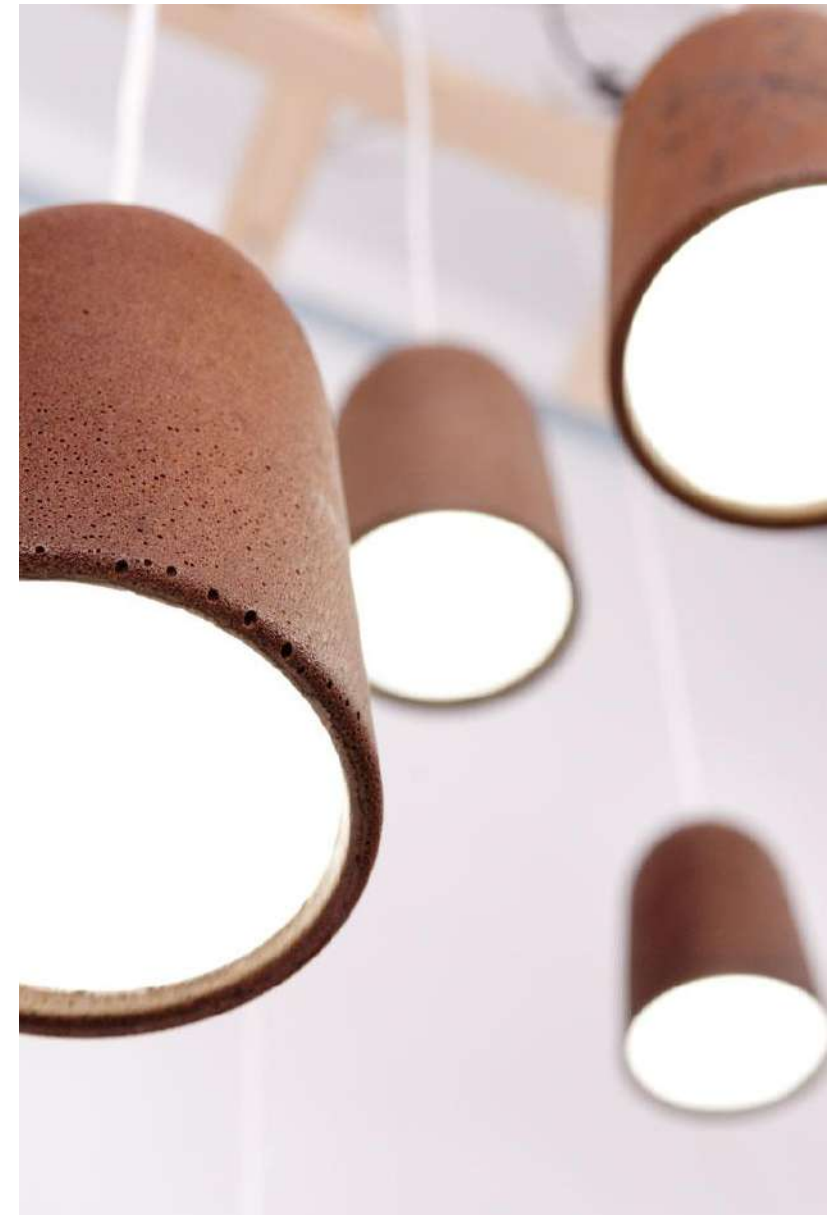
[Choose variation](#)





• Lamps •

Lamp designers like **Raúl Laurí Pla** from Spain and Fermin Benedi Bayer from Germany discovered the potential that spent coffee grounds offer to produce table lamp, floor lamps and bowls. Raul' s series of lamps are made with natural binder. They are 100% natural, biodegradable and renewable and are still conserving **coffee' s colour** and they **smell of coffee!**



• Furniture •

In the UK **Adam Fairweather** is the founder of a company that produces designer office furniture made from spent **coffee grounds** and post-consumer recycled plastic. The materials produced with this process is extremely robust, waterproof, scratch resistant and it doesn't require sanding nor finishing because of its mat finish.



An example of Re-Worked furniture: easy chair and unity coffee table made with Çurface boards containing 100% recycled content and ash wood. Photograph: Re-Worked

• Fabric and shoes •

Waterproof sneakers from **RENS** is combining fabric made with coffee grounds, with recycled plastic waste. The first Rens sneakers made from coffee was launched in the middle of 2019. Rens sneakers using fabric made with coffee grounds Each pair uses 300 grams of coffee grounds and 6 plastic bottles to make sneakers that weigh 460 grams.

Rens was started by two entrepreneurs from Helsinki.

Making **Rens sneakers** start with infusing coffee grounds into plastic pellets and spinning the mixture into a polymer yarn. The yarn is then knitted on a waterproof nano-layer membrane. The natural anti-bacterial qualities of coffee prevents shoes from smelling.



Cchilu (pronounced Chee-Loo) is a Japanese footwear brand that has developed a green technology called XpreSole, to make shoes from spent coffee grounds (SCGs). Innovative textile solutions with fabric made with coffee grounds used in footwear Every major component in the shoe is made from coffee grounds.

Wilson Hsu founded Cchilu in 2011. With XpreSole he is using coffee ground as the key component in footwear to make water repellent shoes out of discarded coffee grounds. Five cups of recycled coffee grounds makes one pair of XpreSole shoes. So far XpreSoles has made about 40,000 pairs. This means that 200,000 cups of waste coffee has been upcycled, thus reducing greenhouse gasses and their carbon footprint.



• Fabric and shoes •

The Czech fashion label “**Kave Footwear**” writes about its special sneakers: “Are you a coffee lover? Then these sneakers are for you! A staggering amount of coffee is drunk around the world every day and tons of used coffee beans are thrown away. We want to change that! Enjoy your coffee and pick up the coffee grounds from it. We use it to make soles for KAVE sneakers.” Each sneaker is unique and made in Zlín, Czech Republic on machines from the last century. Sounds cool right?



C&T effort to encourage greater recycling and reduce waste.

OUR GRS Coffee Grounds

Injectable molding, coffee scent, sturdy and durable, light and wearable.



Hey!

We are the manufacturer for smartphone & laptop accessories and professional on quick customized production solution.

If you also concern about the customized products, please don't miss our ODM service. We believe we can bring value to you.

Feel free to contact us.



Website : www.ctworld168.com

Tel : 020-89014309 / +86-17665023206

Address : Room 501,Building 3,No.539,Shibei Industry Road,Dashi Street,Panyu District,Guangzhou

Copyright © 2022 C&T, All Rights Reserved

Published by: C&T Marketing Operations Center